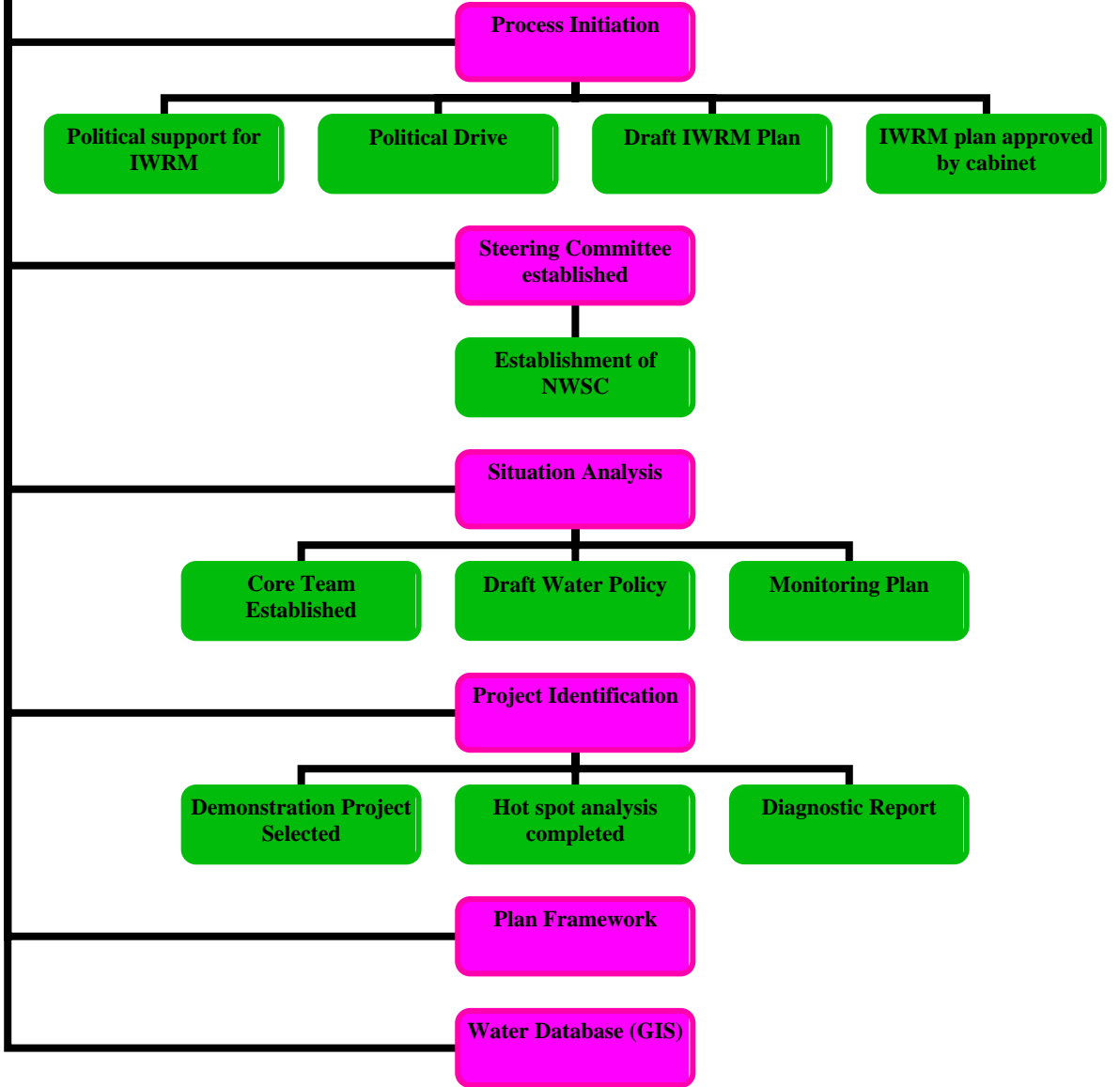


TUVALU ROAD MAP

What Has Been Done



What needs to be done?

Lessons learnt from Successful

Formulate a Vision Statement

Stakeholder analysis/Stakeholder

Promotion, adoption and implementation

Evaluate Plan

Make a communications plan

Draft a Promotions plan

Water Use Efficiency plan for household

Monitoring Plan

Consultations

Review of Terms of reference (WSC)

Plan framework (Whose responsibility)

SANITATION

HEALTH

BUILDING CODE